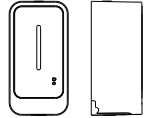


Wall Mounted Automatic Soap Dispenser

Sorento

Please read this instruction carefully before installation and keep it for further reference

PRODUCT MANUAL



Components List

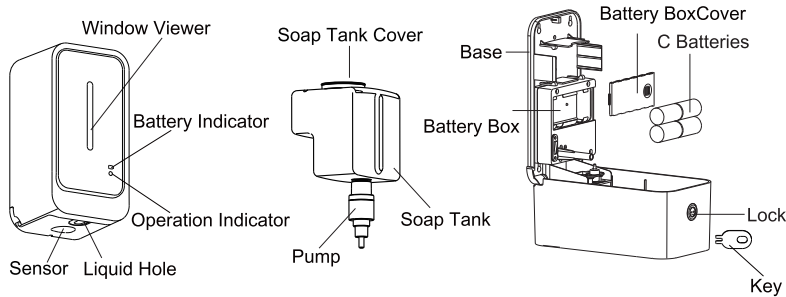
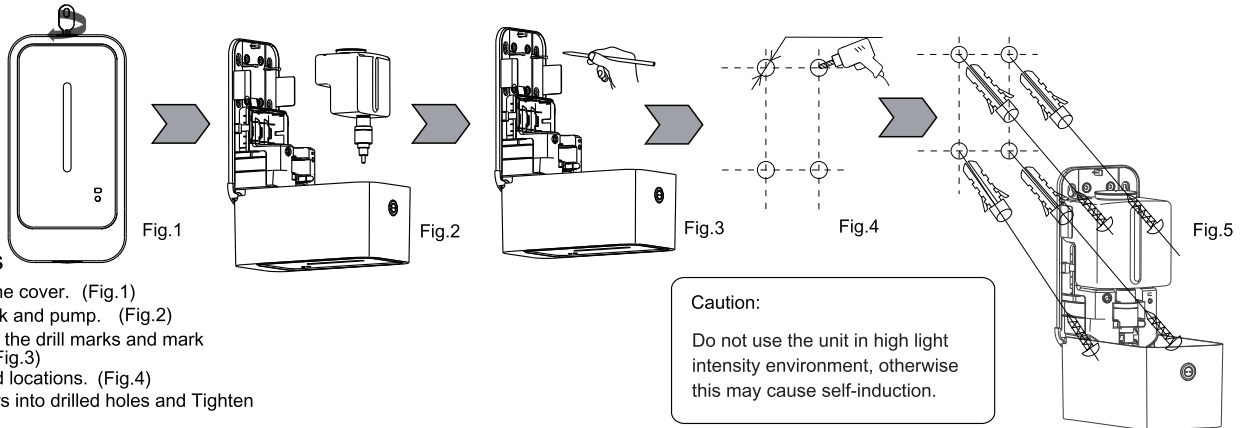


	Illustration	Description	Qty		Illustration	Description	Qty
1		Body	1	4		Plastic Anchor	4
2		Key	1	5		Mounting Screw	4
3		Manual	1				

Installation



Installation Steps

- 1, Use the key to open the cover. (Fig.1)
- 2, Take out the soap tank and pump. (Fig.2)
- 3, Use the back plate for the drill marks and mark the 4 drill locations. (Fig.3)
- 4, Drill 4 holes at marked locations. (Fig.4)
- 5, Insert 4 plastic anchors into drilled holes and Tighten 4 screws. (Fig.5)

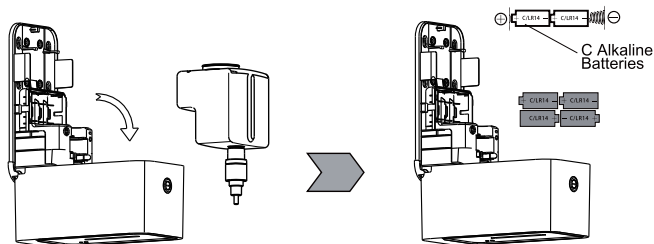
Caution:

Do not use the unit in high light intensity environment, otherwise this may cause self-induction.

Install Battery

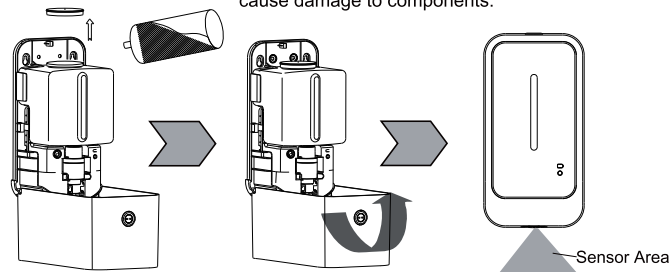
If the red LED blinks the batteries must be replaced.

Caution :
Batteries installed with incorrect polarity may cause malfunction.



Refill Liquid

Caution :
It is forbidden to overfill soap tank which may cause damage to components.



Troubleshooting

Problem	Solution	Problem	Solution
LED does not indicate	<ol style="list-style-type: none"> 1. Check batteries and ensure they are new and properly installed. 2. Check sensor cover for stain. 3. Clean unit properly. 	No soap discharges when motor works	<ol style="list-style-type: none"> 1. Obstructed soap dispenser nozzle. 2. Clean soap container or change it. 3. Check if soap is not liquid enough
LED flashes when unit is not used	<ol style="list-style-type: none"> 1. Low voltage: change batteries. 2. Sensor is activated constantly. 	Insufficient soap is released	<ol style="list-style-type: none"> 1. Soap has hardened: use unit for several times or remove soap container and wash it thoroughly and refill with new soap. 2. Soap nozzle is obstructed: wash soap container and use unit continuously until normal soap quantity is dispensed.

For all other inquiries call your dealer for technical assistance.