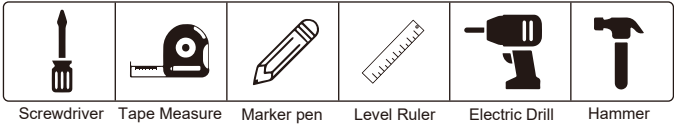
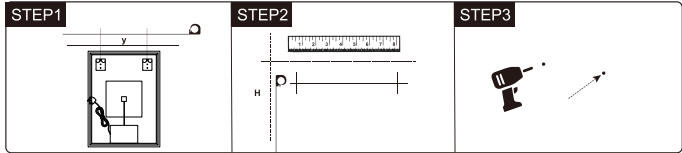


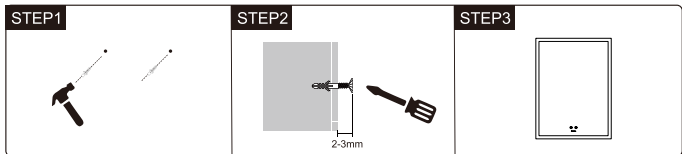
Preparation Tools (Not Included) :



Installation :



Measure the distance between the two hooks	Use pencil to draw parallel lines on the wall, The intersection is the punch position.	Use electric drill to punch holes at the intersection.
--	--	--

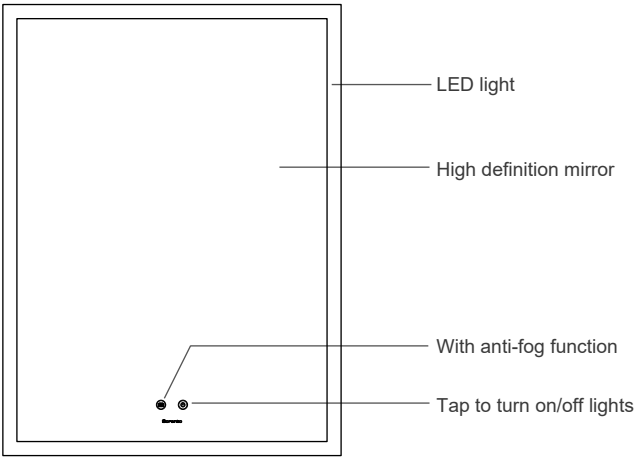
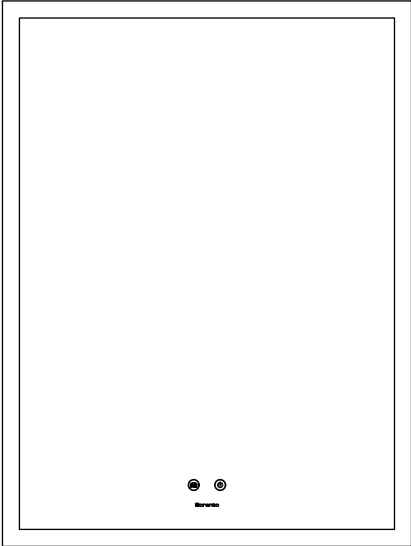


Use hammer to drive the expansion tube into the hole.	Use screwdriver to screw the screw into the expansion tube.	Hang up the mirror, installation is completed.
---	---	--

Sorento

WALL-MOUNTED LED BATHROOM MIRROR

OPERATION MANUAL



Specification:

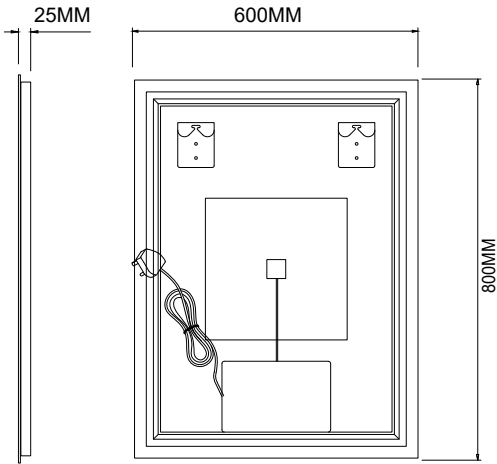
[Product Name] Wall-Mounted LED Bathroom Mirror

[Material] Metal+Glass



[LED Color Temperature] 3000K-6500K

[Input Voltage] AC220-250V

[Product size] 60X80CM



Special feature:

-  4mm Thickness high definition eco-friendly glass mirror
-  Built-in power plug

Packaging List



LED mirror



Screw & Anchor



Instruction Manual