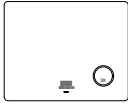


Packaging List



LED mirror

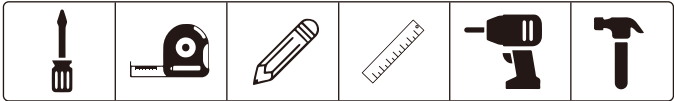


Screw & Anchor



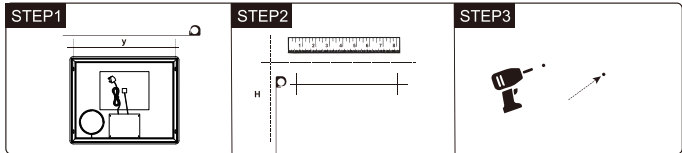
Instruction Manual

Preparation Tools (Not Included):

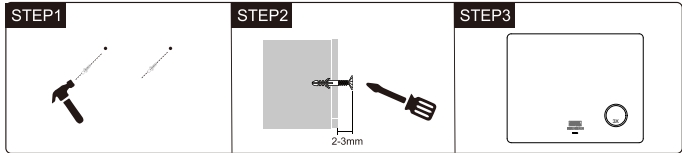


Screwdriver Tape Measure Marker pen Level Ruler Electric Drill Hammer

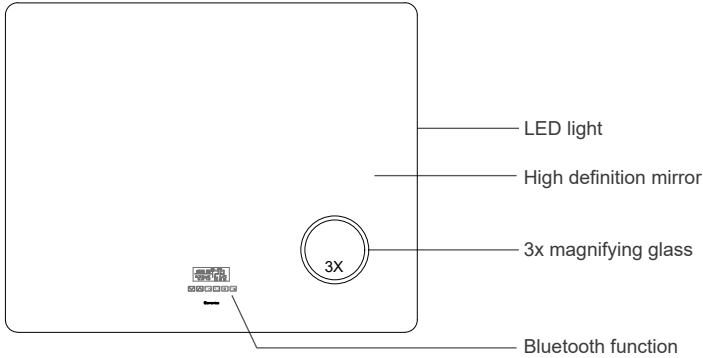
Installation:



Measure the distance between the two hooks
Use pencil to draw parallel lines on the wall.The intersection is the punch position.
Use electric drill to punch holes at the intersection.



Use hammer to drive the expansion tube into the hole.
Use screwdriver to screw the screw into the expansion tube.
Hang up the mirror, installation is completed.



Specification:

[Product Name] Wall-Mounted LED Bathroom Mirror

[Material] Metal+Glass

[LED Color Temperature] 3000K-6500K

[Input Voltage] AC220-250V

[Product size] 100X80CM

Special feature:

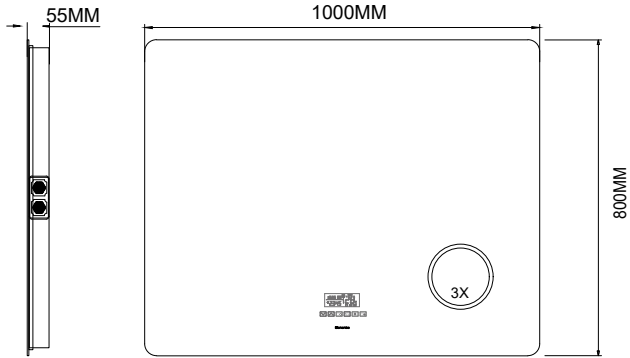
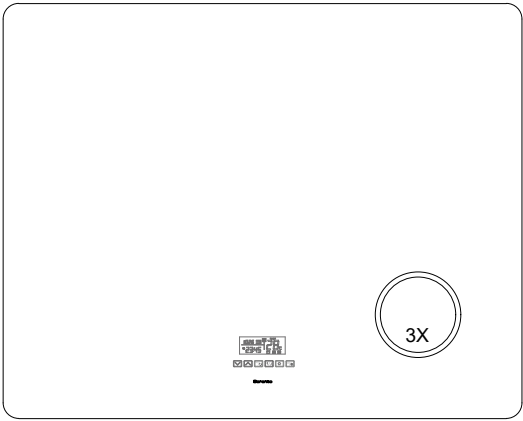
4mm Thickness high definition eco-friendly glass mirror

Built-in power plug

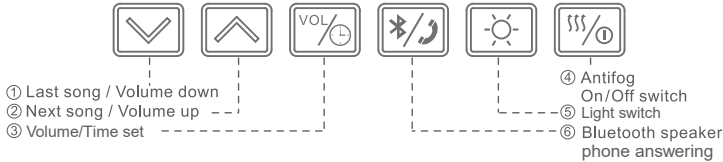
Sorento

WALL-MOUNTED LED BATHROOM MIRROR

OPERATION MANUAL



Operating instructions



- Press ④ to start work. 5s later, display show current temperature and time. Short press ④ to open anti-fog function ,long press ④ 3s to finish work.
- Press ⑤ control light on/off.press ⑥ to open bluetooth speaker function,after the speaker emits a “beep”,open bluetooth function of phone,search and connect the products.
- Press ① to② to choose the songs during playing music.
- Press the ③ open the volume set,then press the ① or② ,while the volume is flashing to adjust the volume.Long press ⑥ button 3 seconds to turn off Bluetooth playback.
- Long Press button ③ for 3s to enter date and time adjustment.Then press button ① or② to adjust date while number is flashing,when adjustment completed,press button③to move to next step.After all the settings are complete,wait for 5s to return to normal work.